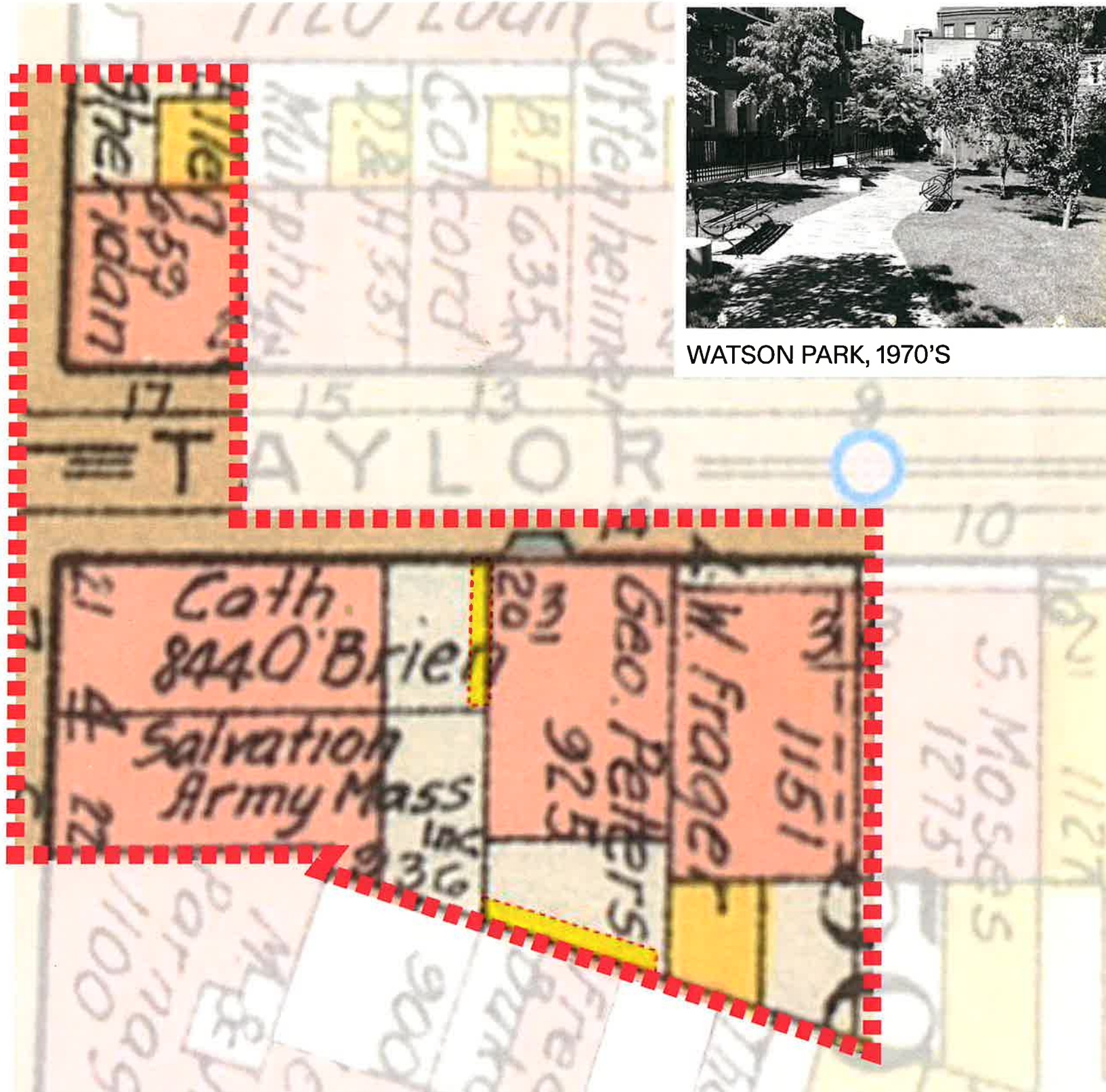


Site Context | History

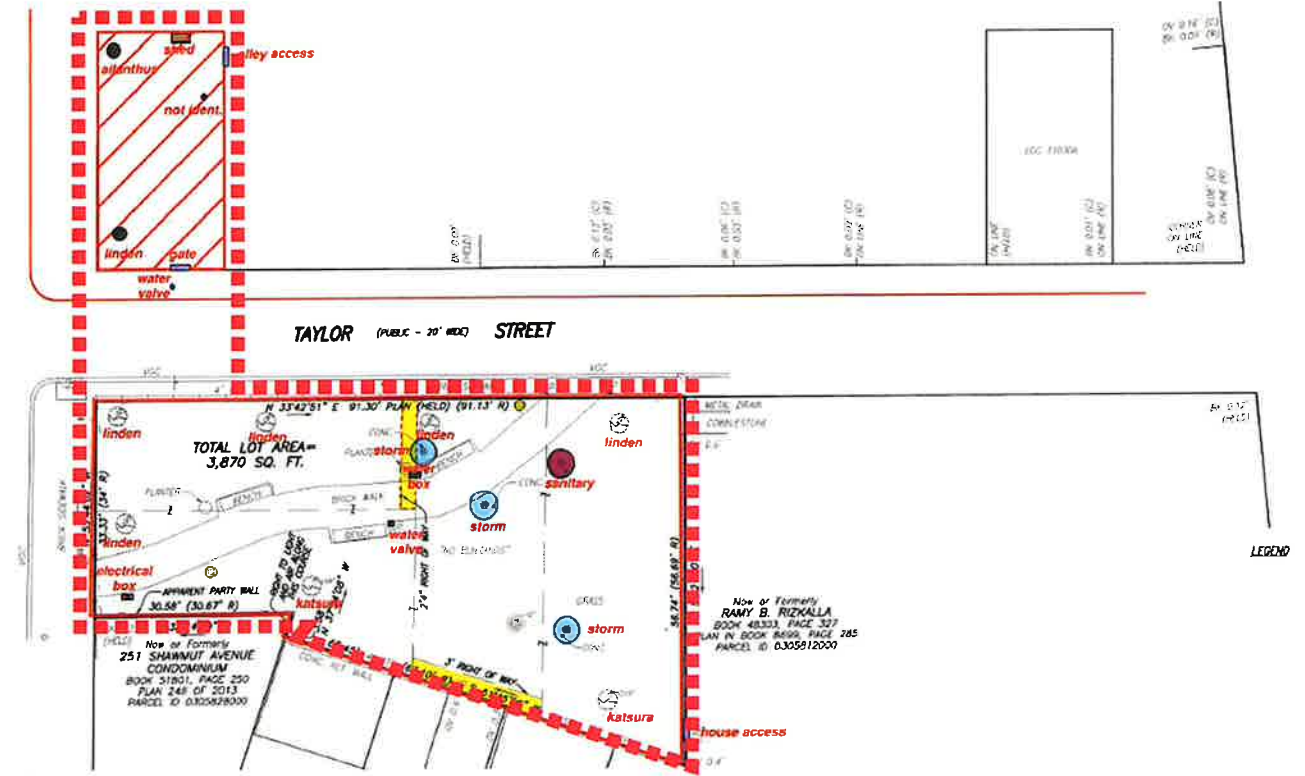


WATSON PARK, 1970'S

BROMLEY MAP, 1938

WATSON PARK

6 JUNE 2023



SITE SURVEY, 2015



NEIGHBORHOOD SCALE LOCUS MAP

Site Context | Inventory

INVENTORY ITEMS

- 1 SHED
- 2 (5) WOOD BENCHES
- 3 PICNIC TABLE
- 4 (2) CURBED TREE PLANTERS
- 5 HISTORIC PARK PLAQUE
- 6 5' METAL FENCE & GATES
- 7 BRICK PAVING
- 8 SANITARY SEWER
- 9 (3) STORM DRAIN
- 10 PLANTING AREA
- 11 WATER BOX
- 12 WATER VALVE
- 13 RESIDENCE ENTRYWAY
- 14 DIRT PATHWAY & GATE
- 15 (8) EXISTING TREES
- 16 (2) CONCRETE PLANTERS
- 17 (2) LIGHT FIXTURES
- 18 ELECTRICAL BOX



SITE INVENTORY PLAN

SITE PHOTOS



PARK VIEW FROM TAYLOR ST.



HISTORIC PARK PLAQUE



LITTLE WATSON PARK



VIEW FROM WITHIN PARK



ANALYSIS ITEMS

- 1 TAYLOR STREET SPLITS PARK, PREVENTING SPATIAL CONTINUITY.
- 2 EXISTING PATHWAY LIMITS OPPORTUNITIES FOR COMMUNITY GATHERING - SERVES AS A “PASSAGE”, NOT A “DESTINATION”
- 3 TALL PERIMETER FENCING IS NOT INVITING & CLOSES OUT POSITIVE BENEFITS OF SHARING THE “TAYLOR STREET EXPERIENCE”.
- 4 SLOPED GRADE ACROSS WATSON PARK CREATES TOPSOIL EROSION, LIMITS OPPORTUNITIES FOR GOOD NEIGHBORHOOD GATHERING SPACES AND CONTRIBUTES TO POOR PLANT DIVERSITY.
- 5 LINDENS ENCOURAGE THE PROLIFERATION OF HONEYDEW, WHICH DARKENS ALL SURFACES IN AND ADJACENT TO THE PARK.
- 6 THE MULTIPLE MATURE TREES ON SITE CREATE A DEEP SHADE ACROSS THE PARK, LIMITING PLANTING OPTIONS.
- 7 THE DIRT FOOTPATH THROUGH THE PARK CHANNELS STORM WATER ACROSS THE SITE & ONTO THE ADJACENT RESIDENCE’S PROPERTY.
- 8 THE CURRENT LOCATIONS OF PARK GATES DO NOT “CELEBRATE” WATSON PARK OR THE EIGHT STREETS NEIGHBORHOOD.
- 9 AILIANTHUS IS A SPARSE, WEAK-WOODED TREE AND DOES NOT CONTRIBUTE TO THE PARK’S CHARACTER.

Site Conditions Analysis | Passive Park Precedent Imagery



PASSIVE PARK AND LONG BENCHES (ABINGDON SQUARE, NYC)



RINGGOLD PARK ENTRY



JACKSON SQUARE PARK ENTRY, NYC



BRADFORD STREET PARK ENTRY



POROUS EDGE PROVIDES COMMUNITY GATHERING OPPORTUNITY (BLEECKER & W. 11TH, NYC)



POROUS PARK EDGE SHARES THE EXPERIENCE OF NICELY SCALED BLEECKER STREET (BLEECKER & W. 11TH, NYC)

WATSON PARK

6 JUNE 2023

CopleyWolff

Community Questions | What do you want to see?

TELL US MORE ABOUT
THE EVENTS THAT TAKE
PLACE AT WATSON PARK!

HOW CAN THE PARK BE
MORE CONNECTED TO
SOUTH END AS A WHOLE?

WHAT DO YOU
WANT TO SEE AT
WATSON PARK IN THE
FUTURE?

WHAT GROUPS
USE THE PARK?

WHAT IS YOUR
FAVORITE PART OF
WATSON PARK
TODAY?